



مدرسة الإبداع
العلمي الدولية
INTERNATIONAL SCHOOL
OF CREATIVE SCIENCE

NAD AL SHEBA نَد الشبَا



KEY STAGE 5 (Year 12 & 13) OPTIONS BOOKLET

ISCS Pathways for Success



Contents

Welcome from our Head of Secondary

Our vision and values

Introduction

Making your choices

UK university requirements

MOE and UAE university requirements

ISCS University Partnerships

Examination fees

A level and BTEC grading system

Our KS5 Pathways for Success

A Level and BTEC options



Welcome from our Head of Secondary

Dear Parents and students,

Welcome to our Key Stage 5 Pathways for Success booklet. The aim of this booklet is to provide both parents and students with key information, advice and guidance with selecting A level/BTEC options.

At Key Stage 5 students normally study a combination of 3-4 A levels/BTECs dependent on whether they are taking the Academic route or Practical route. Students study A levels/BTECs in Year 12 through to Year 13. We have a core programme of study for all students which includes the Duke of Edinburgh Award, Study skills and the Extended Project. Students will be able to choose from a selection of 12 A levels subjects and 2 BTECs

Choosing A level/BTEC options influence what a student studies at university and their future career aspirations. At the International School of Creative Science Dubai, we have endeavored to make these decisions easier by providing students with several Pathways for Success. These are clear progression pathways for students, which link closely to our Post 16 options, university courses and to numerous future career routes. Furthermore, we have also provided an outline of the progression requirements for further study in the UAE and UK.

We follow the Pearson and Cambridge A level/BTEC UK curriculum, which students' study alongside the UAE curriculum. We have a strong set of specialist teachers in our secondary team, who deliver innovative and creative lessons.

I am looking forward to meeting you at our Pathways for Success afternoon and hope this booklet will support you with your choices.

Yours Sincerely,



Mr Faheem Mohammed
Head of Secondary

Our Shared Vision, Mission and Values

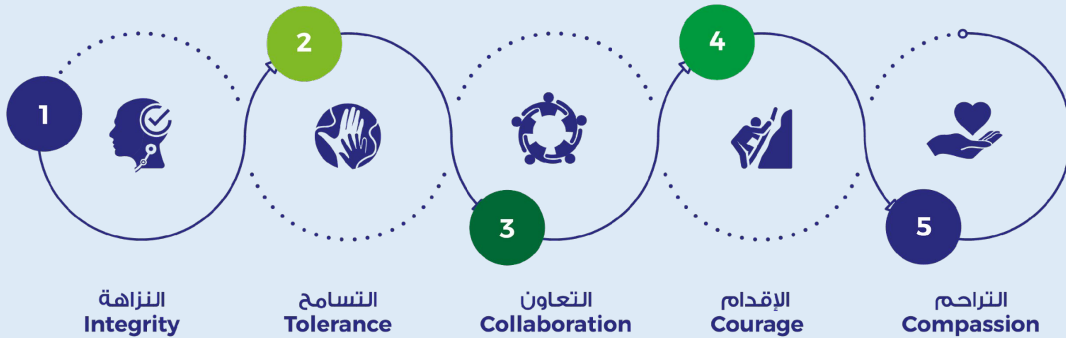
Mission

To ignite a passion for learning, by creating an inclusive community which fosters virtues, innovation, and best practice focused on achieving successful outcomes for all our students.

Vision

Lighting the way to excellence rooted in faith, cultivating life-long learners and global citizens equipped with a moral compass.

School Values



Our curriculum aims

We aim to offer an innovative and creative curriculum which develops our students' employability skills and prepares them for their future career aspirations. Islamic values are a core part of our curriculum.

Key features of our curriculum

- Use of innovative technology
- Development of science skills
- Employability skills (work experience)
- Curriculum based on students' future career aspirations and industry needs
- Islamic values and faith-based curriculum



Making your choices

As we are a school operating in the UAE which offers a UK curriculum, we must follow the UK requirements and those of the Ministry of Education. Therefore, all students must take several compulsory subjects outlined below.

UK curriculum

Students choose to study 3-4 A level/BTEC subjects. Students will also have a core programme of study, which includes the Duke of Edinburgh, Study skills and Extended Project.

UK university requirements

Most universities will ask students for a minimum of 5 IGCSEs and 3 A levels or a combination of A levels and BTEC. UK universities also use the UCAS points system which links to the A level and BTEC grading system. UCAS points and grades vary across different universities and courses.

MOE curriculum

All students must study Arabic. Non-native students must study ASL. In addition, all Muslim students must also study Islamic studies and Social studies.

Shahadat Al-Thawasiya Al-Amma

The Shahadat Al-Thawasiya Al-Amma or 'Secondary leaving certificate' is a student's evidence that they have completed secondary schooling in the UAE. This is often referred to as the 'Equivalency Certificate' and is essential for students planning to continue their studies in the UAE.

What are the requirements of the Shahadat Al-Thawasiya Al-Amma?

In order to achieve the Shahadat Al-Thawasiya Al-Amma students must meet the following criteria:

- Achieve 5 iGCSEs (at level 2 or above)
- Advanced level (A level) in Year 13 at a grade D or better
- Pass the Arabic studies exam in Year 12
- Pass the Islamic studies exam in Year 12 (Muslim students only)

UAE universities

Each university will have different entry requirements which are specific to the university and course. Emirati students will be expected to have gained the Shahadat Al-Thawasiya certificate.



ISCS University partnerships

British University in Dubai

The British University in Dubai was established in 2003 as a research-based university. BUID is licensed by the UAE Ministry of Education.

Scholarship Programme

High School GPA	Scholarship	GPA required to maintain the scholarship
≥95%	50%	3.75
90%-94%	40%	3.5
85%-89%	30%	3.3
75%-84%	25%	3.0
70%-74%	20%	3.0

Jumeira University

Jumeira University is an Emirati University established in 2012 offering a wide range of internationally benchmarked undergraduate programs that are accredited by the uae ministry of higher education.

Scholarship Programme

- Award 2 students graduating with 90% high school score 75% tuition discount.
- Award 8 students graduating with 80% high school score 50% tuition discount.
- Graduating students from international school of creative science (NAS) with 70% high school score 30% tuition discount.
- 50% tuition discount on the English language program for students

Examination fees and grading structure

Examination & admin fees

Before students can be entered for examinations, parents will be expected to pay examination entry fees. There will be an examination entry and admin fee for each examination that student are entered for. Further information about examination and admin fees will be sent out to parents well in advance of examinations.

A level grading structure

A levels use the A* to E grading structure, with A* being the highest grade and E being the lowest grade. A U grade is a fail.

A*-E Grading Structure	A*	A	B	C	D	E
UCAS Points (UK)	56	48	40	32	24	16

BTEC grading structure

BTEC level 3 uses the D* to P grading structure. D* is the highest grade and is equivalent to an A* at A level. P is the lowest grade and is equivalent to an E grade at A level.

BTEC Grading Structure	D*	D	M	P
UCAS Points (UK)	56	48	32	16

ISCS Pathways for Success

We have planned out several pathways to support our students with their A level options, progression into Post 16 and with future career aspirations. Our pathways aim to prepare students for new industries and careers that are emerging in the UAE and beyond. The outlines for each pathway are below.

Pathways for Success	What A level subjects should I study?	What careers can this lead into?
Medicine, Veterinary & Health pathway	Biology, Chemistry, Maths, ,Psychology	Anesthesiologists, Dentists, Doctor, Opticians, Pharmacists, Psychiatrists, Psychologists, Surgeons, Veterinarians

Pathways for Success	What A leve/BTEC subjects should I study?	What careers can this lead into?
Business and Accounting pathway	Business, Maths, IT , Accounting, Digital Media, BTEC Business	Accounting, Bookkeeping, Managers, Marketing, Entrepreneur





ISCS Pathways for Success

Pathways for Success	What A level subjects should I study?	What careers can this lead into?
Engineering and Technology	Maths, Physics, Design and Technology,	Aerospace Engineers, Archeologists, Architect

Pathways for Success	What A level subjects should I study?	What careers can this lead into?
Media & Art pathway	English, Digital Media, IT, Art & Design , Design and Technology	Art Directors, Broadcast, Technicians, Camera operators, Publishers, Editors, Fashion Designers, Graphic Designers



KS5 Core Programme

All students will study the ISCS Core Programme which aims to develop students' academic skills, social skills and prepares them for further study.

Duke of Edinburgh



The Duke of Edinburgh's International Award is a global non-formal education framework which operates in more than 130 countries and territories, helping to inspire young people to dream big, celebrate their achievements and make a difference in their world.

Through developing transferable skills, increasing their fitness levels, cultivating a sense of adventure, and volunteering in their community, the Award helps young people to find their purpose, passion and place in the world. Participants pursue their self-identified areas of interest, developing their own unique Award programme of skill-building, physical activity, voluntary community service, and challenge through outdoor adventure.

The awards focus on life skills, which are key in ensuring students are well rounded individuals.

Extended Project Qualification

The Pearson Edexcel Level 3 Extended Project allows students to study a topic area which extends their learning. Students select a project topic which expands their learning in their field of study, in a related area, or that is relevant to their own personal interests.

Students can choose from four different type of projects:

- a dissertation
- an investigation/field study
- a performance
- an artefact



Grade	Points
A*	28
A	24
B	20
C	16
D	12
E	8

Students will be assessed on their ability to plan, manage, complete and review their project. Students will be awarded a A*-E grade for their Extended Project, this also equates to additional UCAS points.

KS5 CORE PROGRAMME

ISCS Academic or Practical route

At Key Stage 5 students can either take the ISCS Academic route or Practical route. These are dependent on students' interests and aspirations.

ISCS Academic route	ISCS Practical route
3-4 A levels	2 A levels + 1 BTEC

KS5 option blocks

Option 1	Option 2	Option 3	Option 4	Core programme of study	MOE(core)
A Level Digital Media and design	A level Chemistry	A level Maths	A level Psychology	Extended Project	Arabic
A Level Biology	A level Design and Technology	A level Art	A level Physics	Study skills/PSHE	Islamic
A Level Accounting	A level Computer Science	A level IT	BTEC Business	Duke of Edinburgh	Moral education
		A level Business	BTEC Sport	PE	Quran

KS5 Options

Our KS5 options are:

A level

BTEC

Art and Design

Accounting

BTEC Business

Business

Computer science

BTEC Sport

Biology

Chemistry

Design and Technology

Digital Media and
Design

IT

Maths

Physics

Psychology

A Level Psychology

Psychology is the scientific study of the mind and how it dictates and influences our behaviour, from communication and memory to thought and emotion.



Content overview

<p>Paper 1 Unit 1: Social and cognitive psychology</p>	<p>Paper 2: Unit 2: Biological psychology, learning theories and development</p>
<p>Topic A: Social psychology Students must show an understanding that social psychology is about aspects of human behaviour that involve the individual's relationship to other persons, groups and society, including cultural influences on behaviour.</p> <p>Topic B: Cognitive psychology Students must show an understanding that cognitive psychology is about the role of cognition/cognitive processes in human behaviour. Processes include perception, memory, selective attention, language and problem solving. The cognitive topic area draws on how information is processed in the brain</p>	<p>Topic C: Biological psychology Students must show an understanding that biological psychology is about the mechanisms within our body and how they affect our behaviour, focusing on aggression and body rhythms.</p> <p>Topic D: Learning theories and development Students must show an understanding that learning theories are about learning from the environment and the effects of conditioning, reinforcement, punishment, the role of reward and social learning. Students must also show an understanding of learning theories as theories of development and psychodynamic ideas and concepts as different explanations for development, as well as focusing on individual differences.</p>
<p>Externally assessed Written examination 1 hour and 30 minutes 20% of the total A level</p>	<p>Externally assessed Written examination: 2 hours 30% of the total A level</p>

A LEVEL PSYCHOLOGY



A Level Psychology

Paper 3 Unit 3: Applications of psychology	Paper 4 Unit 4: Clinical psychology and psychological skills
<p>Topic E: Developmental psychology Students must show an understanding that developmental psychology is about the development of the individual from before birth to adolescence and beyond, in that what we experience as children affects us including our later development.</p> <p>Topic F: Criminological psychology Students must show an understanding that criminological psychology is about the definition and causes of crime and anti-social behaviour, issues around identification of offenders, and treatment of offenders.</p> <p>Topic G: Health psychology Students must show an understanding that health psychology is about understanding health from a biological, cognitive and social basis, focusing on stress, and that health psychology is about promoting good health.</p>	<p>Topic H: Clinical psychology Students must show an understanding that clinical psychology is about mental health issues, including issues in diagnosing such issues, features and symptoms, explanations, and treatments and therapies.</p> <p>Topic I: Psychological skills This is a synoptic section in which students will be asked to draw on other areas of the qualification in order to understand conceptual and methodological issues. Students will develop an understanding of how to use theories, methodology and evidence from many areas of psychology and apply them to issues.</p> <p>Relevant psychological skills have been contextualised in topics A–H. This topic collects them together (excluding topics F and G) in order to ensure that all content has been covered. Students must consider issues and debates from across all topics in order to develop a general knowledge of key issues and debates.</p>
<p>Externally assessed Written examination: 1 hour and 30 minutes 20% of the total A level</p>	<p>Externally assessed Written examination: 2 hours 30% of the total IAL</p>

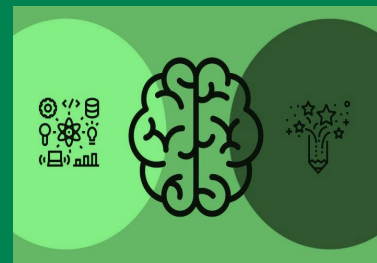
A LEVEL PSYCHOLOGY

What can you study with Psychology at university?

Psychology will support the study of sciences, especially health and social sciences, like Biology and Sociology. It also requires excellent English skills due to the amount of terminology and essay writing involved.

What are the possible career pathways?

- Human Resources
- Teaching
- Psychology related field e.g. Clinical, Education



A Level Business

This course allows students to develop an enthusiasm for studying business, gain a holistic understanding of business in a range of contexts, generate enterprising and creative approaches to business opportunities, problems and issues, be aware of the ethical dilemmas and responsibilities faced by organisations and individuals and acquire a range of relevant business and generic skills, including decision making, problem solving, the challenging of assumptions and critical analysis.

Paper 1 - Marketing and People:	Paper 2 – Managing Business Activity:	Paper 3 – Business Decisions and strategy:	Paper 4 – Global Business:
<p>Content summary</p> <ul style="list-style-type: none"> □ Meeting customer needs □ The market □ Marketing mix and strategy □ Managing people □ Entrepreneurs and leaders 	<p>Content summary</p> <ul style="list-style-type: none"> □ Planning a business and raising finance □ Financial planning □ Managing finance □ Resource management □ External influences 	<p>Content Summary</p> <ul style="list-style-type: none"> □ Business objectives and strategy □ Business growth □ Decision-making techniques □ Influences on business decisions □ Assessing competitiveness □ Managing change 	<p>Content Summary</p> <ul style="list-style-type: none"> □ Globalisation □ Global markets and business expansion □ Global marketing □ Global industries and companies (multinational corporations)
<p>Written examination: 2 hours 80 marks</p>	<p>Written examination: 2 hours 80 marks</p>	<p>Written examination: 2 hours 80 marks</p>	<p>Written examination: 2 hours 80 marks</p>
<p>25% of the total IAL</p>	<p>25% of the total IAL</p>	<p>25% of the total IAL</p>	<p>25% of the total IAL</p>

A LEVEL BUSINESS

A Level Business

What can you study alongside Business post 16?

This course will compliment other A-levels including but not limited to; Digital media and design, Design and technology, Accounting, Maths, Computer Science and IT.

What are the possible career pathways?

A business management degree prepares you for a career in business, which can apply to any sector or industry. Some of these include: Business adviser, Business analyst, Business development manager, Chartered management accountant, Corporate investment banker, Data analyst, Data scientist, Forensic accountant, Insurance underwriter, Management consultant, Project manager, Risk manager, Stockbroker and Supply chain manager



A LEVEL BUSINESS

A Level Art & Design

This qualification can be followed through the broad-based title of Art, Craft and Design or through one of five endorsed titles: **Fine Art, Graphic Communication, Textile Design, Three-dimensional Design and Photography.**

Component 1: Personal Investigation	Component 2: Externally-set Assignment
<p>Content summary</p> <p>Students:</p> <ul style="list-style-type: none"> generate practical work, ideas and research from sources explore media and processes, develop and refine ideas, and present outcomes. 	<p>Content summary</p> <p>Students respond to one externally set, broad-based thematic starting point to encourage independence in developing ideas, intentions and response.</p>
<p>Students must submit:</p> <p>Part 1: practical work from personal starting points</p> <ul style="list-style-type: none"> Supporting studies Personal outcome(s) <p>Part 2: personal study a piece of continuous prose (minimum of 1000 words).</p>	<p>Students must submit:</p> <ul style="list-style-type: none"> Preparatory studies Personal outcome(s) in 15 hours of sustained focus in which students create final response(s) to the theme.

A LEVEL ART & DESIGN

A Level Art & Design

What is the course requirement and progression?

It is not a prerequisite that a student wishing to study A Level Art must have completed GCSE Art and Design, however the student will be expected to produce evidence of ability in drawing and interest in the subject before being accepted onto the course. Entry onto the course will require a Grade 7 at GCSE

What are the possible career pathways?

Architect, Art Historian, Publisher, Gallery Manager, Writer/ critic, Game Designer, Stop Motion Animator, Interface Designer, Advertiser, Web Designer, Furniture Designer, Graphic Designer, Illustrator, Interior Designer, Printmaker, Product Designer, Fashion Designer, Video/film/photographer, Sculptor, Teacher, Lecturer and many more besides



A Level Biology

Biology is a diverse and popular subject. Covering topical issues, such as medical science, genetic engineering, biotechnology, and the environment, you'll develop an essential knowledge and understanding of some of its key areas.

AS Level: (Year 1)	A2 level: (Year 2)
Content summary Molecules, Diet, Transport and Health Cells, Development, Biodiversity and Conservation Practical Skills in Biology I	Content summary Energy, Environment, Microbiology and Immunity Respiration, Internal Environment, Coordination and Gene technology Practical Skills in Biology II
Assessment information: Weighting: 50% 3 assessments each is 1 hour and 30 minutes long and is out of 80 marks	Assessment information: Weighting: 50% 3 assessments each is 1 hour and 45 minutes long and is out of 90 marks

A LEVEL BIOLOGY



A Level Biology

What can you study with Biology at university?

Studying biology can lead to many exciting career opportunities in the very varied fields of medicine, genetics, healthcare, forensics, sports science and environmentalism, to name but a few. The transferable skills you will learn, such as problem solving, are also useful in many other areas, such as law.

What are the possible career pathways?

Students who take A Level Biology can go on to study subjects including: Veterinary Science, Medicine, Optometry, Nursing, Dentistry, Pharmacy, Physiotherapy and Sports Science.

They can also study Microbiology, Forensic Science, Biophysics, Genetics, Neuroscience, Botany, Zoology, Ecology, and, of course, Biology.



A Level Chemistry

The aims of the International Advanced Level in Chemistry enable students to develop :

- an interest in, and enthusiasm, for chemistry including developing an interest in further study and careers in chemistry
- an appreciation of how society makes decisions about scientific issues and how the sciences contribute to the success of the economy and society
- a deeper understanding of the skills, knowledge and understanding of *How Science Works*, essential knowledge and understanding of different areas of the subject and how they relate to each other.

IAS – Year 1	IAS – Year 2
<p>Content summary</p> <p>3 topics covered in iAS: Unit 1 – The core principles of chemistry Unit 2 – Application of core principles in chemistry Unit 3 – Chemistry Laboratory Skills I</p>	<p>Content summary</p> <p>3 topics covered in iA2 Unit 4 – General Principles of chemistry I – Rates, Equilibria and further organic chemistry Unit 5 – General Principles of Chemistry II – Transition metals and organic nitrogen chemistry Unit 6 – Chemistry laboratory skills II</p>
<p>Assessment information Year 1 - Weighting on overall iAL grade is 50%</p> <p>Exams are modular and can be assessed on any of the</p> <p>Assessments take place in January and June</p> <p>Unit 1 – 40% of iAS grade, 20% of iAL grade (1 hour 30mins exam) Unit 2 - 40% of iAS grade, 20% of iAL grade (1hour 30mins) (1 hour 30mins exam) Unit 3 – 20% of iAS grade, 10% of iAL grade (1 hour 15mins exam)</p>	<p>Assessment information Year 2 - Weighting on overall iAL grade is 50%</p> <p>Exams are modular and can be assessed on any of the</p> <p>Assessments take place in January and June</p> <p>Unit 4 – 40% of iA2 grade, 20% of iAL grade (1 hour 40mins exam) Unit 5 - 40% of iA2 grade, 20% of iAL grade (1 hour 40mins exam) Unit 6 – 20% of iA2 grade, 10% of iAL grade (1 hour 15mins exam)</p>

A LEVEL CHEMISTRY



A Level Chemistry

What can you study with Chemistry at university and what are the career pathways?

Studying Chemistry at A-Level can open many doors for students wanting to pursue various pathways at university level. Students who have previously studied Chemistry have gone on to study courses such as: Medicine, Pharmacy, Dentistry, Optometry, Chemical engineering and many more.

University students have then gone on to pursue careers such as being a Doctor, Dentist, Pharmacist, Care worker, Optometrist and many more



A LEVEL CHEMISTRY

A Level Computer Science

The aim of the Cambridge International A Level Computer Science syllabus is to encourage learners to develop an understanding of the fundamental principles of computer science and how computer programs work in a range of contexts. Learners will study topics including information representation, communication and Internet technologies, hardware, software development, and relational database modelling. As they progress, learners will develop their computational thinking and use problem solving to develop computer-based solutions using algorithms and programming languages.

Paper 1 Theory Fundamentals	Paper 2 Fundamental Problem-solving and Programming Skills	Paper 3 Advanced Theory	Paper 4 Further Problem-solving and Programming Skills
Content summary 1.1 Information representation 1.2 Communication and Internet technologies 1.3 Hardware 1.4 Processor fundamentals 1.5 Systems software 1.6 Security, privacy and data integrity 1.7 Ethics and ownership 1.8 Database and data modelling	Content summary 2.1 Algorithm design and problem-solving 2.2 Data representation 2.3 Programming 2.4 Software development	Content Summary 3.1 Data representation 3.2 Communication and Internet technologies 3.3 Hardware 3.4 System software 3.5 Security 3.6 Monitoring and control systems	Content Summary 4.1 Computational thinking and problem-solving 4.2 Algorithm design methods 4.3 Further programming 4.4 Software development
Written examination: 1 hour 30 minutes 75 marks	Written examination: 2 hours 75 marks	Written examination: 1 hour 30 minutes 75 marks	Written examination: 2 hours 75 marks
25% of the total IAL	25% of the total IAL	25% of the total IAL	25% of the total IAL

A LEVEL COMPUTER SCIENCE

A Level Computer Science

What can you study with Computer Science at university?

Computer Science is a well-respected A-Level that will help you to gain access to a variety of degree courses at competitive universities. Equally, there are several software engineering, courses which have Computer Science as a prerequisite.

What are the possible career pathways?

After university, there are numerous interesting fields of study and professions that you can go into. Possible careers include all strands of Engineering, Material Sciences, Software Applications, Systems Analyst, Software Applications Developer and Web Designer. Computer Science will also lead on to robotics, artificial intelligence, machine learning, cloud computing, big data processing, networking, ethical hacking, computer game development, home automation or even teaching. So much of the world uses computers nowadays that having a good understanding of how computers work and how to program them will set you up for success in many strands of life.



A Level IT

The Pearson's International A Level IT syllabus encourages learners to develop an understanding of the fundamental principles of computer systems. It helps them to develop a broad range of skills, knowledge and understanding for different IT systems. Learners study the structure and use of IT systems within a wide range of organizations. As a result, learners gain an understanding of applications software, information systems and the social relevance of ICT. The syllabus explores topics including Hardware, Software, Networks, the Online Environment, IT systems, Data and Databases and ICT in the wider context.

Paper 1 Theory IAS Unit 1	Paper 2 Practical IAS Unit 2	Paper 3 Advanced Theory IA2 Unit 3	Paper 4 Practical IA2 Unit 4
Content summary Topic 1: Hardware and software Topic 2: Networks Topic 3: The online environment Topic 4: IT systems Topic 5: Data and databases Topic 6: Wider issues.	Content summary Topic 7: Understanding the functionality of HTML Topic 8: Understanding the functionality of CSS Topic 9: Understanding the functions of JavaScript Topic 10: Designing web pages Topic 11: The semantic web.	Content Summary Topic 12: Manipulating data Topic 13: Enabling technologies Topic 14: Using IT systems in organization's Topic 15: Systems development Topic 16: Emerging technologies	Content Summary Topic 17: Use of features of database solutions Topic 18: Relational database concepts Topic 19: Database solutions.
Externally assessed Written examination: 2 hours 80 marks	Externally assessed practical examination: 3 hours 80 marks	Externally assessed Written examination: 2 hours 80 marks	Externally assessed practical examination: 3 hours 80 marks
25% of the total IAL	25% of the total IAL	25% of the total IAL	25% of the total IAL

A LEVEL IT

A Level IT

What can you study with IT at university?

IT is a well-respected A-Level that will help you to gain access to a variety of degree courses at competitive universities. Equally, there are several software engineering, courses which have Computer Science as a prerequisite.

What are the possible career pathways?

Possible careers include:

- Information Security Analyst
- Software Developer
- Data Scientist
- IT Manager
- Computer Systems Analyst
- Web Developer
- Database Administrator



A Level Physics

The content is relevant for learners who have achieved an International GCSE in Physics and who want to study this subject at a higher level. It covers the major topics in physics, including mechanics, materials, waves, electricity, fields, thermodynamics, radiation, particles, oscillations and cosmology. Assessment consists of three written papers at IAS level that are externally assessed. The International A level consists of three further written papers that are externally assessed.

IAS Unit 1: Mechanics and Materials *Unit code: WPH11/01	IAS Unit 2: Waves and Electricity *Unit code: WPH12/01	IAS Unit 3: Practical Skills in Physics I *Unit code: WPH13/01	IA2 Unit 4: Further Mechanics, Fields and Particles *Unit code: WPH14/01	IA2 Unit 5: Thermodynamics, Radiation, Oscillations and Cosmology *Unit code: WPH15/01
Content overview <ul style="list-style-type: none"> • Mechanics • Materials 	Content overview <ul style="list-style-type: none"> • Waves and Particle Nature of Light • Electric Circuits 	Content overview Students are expected to develop experimental skills, and a knowledge and understanding of experimental techniques, by carrying out a range of practical experiments and investigations while they study Units 1 and 2	Content overview <ul style="list-style-type: none"> • Further Mechanics • Electric and Magnetic Fields • Nuclear and Particle Physics 	Content overview <ul style="list-style-type: none"> • Thermodynamics • Nuclear Decay • Oscillations • Astrophysics and Cosmology
Externally assessed Written examination: 1 hour and 30 minutes 80 marks	Externally assessed Written examination: 1 hour and 30 minutes 80 marks	Externally assessed Written examination: 1 hour and 20 minutes 50 marks	Externally assessed Written examination: 1 hour and 45 minutes 90 marks	Externally assessed Written examination: 1 hour and 45 minutes 90 marks
40% of the total IAS 20% of the total IAL	40% of the total IAS 20% of the total IAL	20% of the total IAS 10% of the total IAL	40% of the total IA2 20% of the total IAL	40% of the total IA2 20% of the total IAL

A LEVEL PHYSICS

A Level Physics

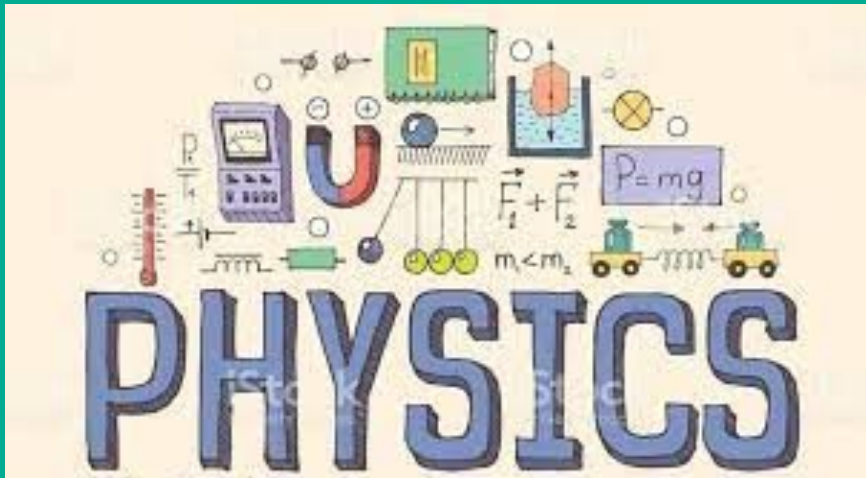
Prior learning and other requirements

Students who would benefit most from studying these qualifications are likely to have a Level 2 qualification in this subject such as a GCSE in Physics and also a GCSE in mathematics (or equivalent).

What are the possible career pathways?

Students can progress from these qualifications to:

- a range of different, relevant academic or vocational higher education qualifications, e.g. degrees in physics or related subjects including engineering and environmental science or equivalent qualifications such as BTEC Higher Nationals in Engineering
- employment
- further training.



A Level Design and Technology

A Level Design and Technology encourages students to be innovative, creative and to develop their ability to design high quality products. Students will develop an awareness of the significance of design and technology on society, while also learning more about production processes and industrial practices. Students will be encouraged the use ICT to build their design and technological abilities, and develop critical evaluation skills which they can employ in a variety of technical, aesthetic, economic, environmental, social and cultural contexts.

Component 1	Component 2:
Content summary This is a written paper which tests knowledge, understanding, product analysis and design. There are three sections; in each section candidates answer one question from a choice of three.	Content summary This is a coursework project which involves an individual design problem and production of a design model.
Weighted at 30% of total marks	Weighted at 20% of total marks
Component 3:	Component 4:
This is a written paper which tests design, knowledge and understanding in three focus areas; candidates specialise in one of these areas. There are two sections in this paper. In Section A candidates answer two structured knowledge application questions from a choice of three on their chosen focus area. In Section B candidates answer the one design question on their chosen focus area.	This is a coursework project, and it can either be developed from the Component 2 project or be a completely new project covering Components 2 and 4 in an holistic way.
Weighted at 30% of total marks	Weighted at 20% of total marks

A Level Design and Technology

What can you study with Design and Technology at university ?

Students who study Design and Technology can progress into Catering, Design, architecture and engineering courses.

What are the possible career pathways?

Popular careers for people with design and technology qualifications include: **fashion designer, tailor, product designer, architect, software engineer, civil engineer, carpenter and chef.**



A Level Digital Media and Design

Digital Media and Design is for students who want to explore a range of processes and techniques in digital media. Students completing this course will explore: digital photography, moving image through film and animation, and mobile and multimedia applications including games design.

Component 1: Portfolio	Component 2: Externally Set Assignment	Component 3: Personal Investigation
<p>Students choose a theme from the list in the syllabus.</p> <p>There are two elements to the portfolio:</p> <ul style="list-style-type: none"> • supporting studies • a proposal 	<p>10 hours 100 marks</p> <p>Students choose one assignment from the question paper. There are two elements to the assignment:</p> <ul style="list-style-type: none"> • supporting studies and • a final outcome, <p>This will be produced during a supervised test of 10 hours' total duration</p>	<p>This is a practical component supported by written work.</p> <p>Students research a topic or theme of their choice.</p> <p>There are two elements to the investigation:</p> <ul style="list-style-type: none"> • a final practical outcome and • written analysis (1000–1500 words)
Externally assessed 25% of the A Level	Externally assessed 25% of the A Level	Externally assessed 50% of the A Level

A LEVEL DIGITAL MEDIA AND DESIGN

A Level Digital Media and Design

50% of the total International
GCSE

50% of the total International
GCSE

What can you study with Digital Media and Design at university?

Students can study amongst others: game design, web development, 3D graphics, graphic design, photography film and animation.

What are the possible career pathways?

- Digital media photographer.
- Video editor.
- Animator.
- Social media specialist.
- Graphic designer.
- Video game designer.
- Web analytics specialist.
- Web developer.



A LEVEL DIGITAL MEDIA AND DESIGN

A Level Accounting

Students studying Edexcel International Advanced Level in Accounting will gain an understanding of the purposes, principles, concepts and techniques of accounting and develop transferable skills in numeracy, communication and ICT.

AS Level Year 1 (50% weighting)	A Level Year 2 (50% weighting)
Content summary	Content summary
Unit 1: The Accounting System and Costing	Unit 2: Corporate and Management Accounting
Students will be assessed on their knowledge, understanding and skills of accounting systems and costing.	Students will be assessed on their knowledge and understanding of and skills in corporate and management accounting.

Assessment information:

Students sit one assessment in year 1 and one in year 2.

The paper is split into two sections.

Students must complete:

- Section A – Two compulsory 55-mark, multi-part questions based on given data.
- Section B – Three optional 30-mark, multi-part questions from a choice of four.
- There will be a resource booklet that accompanies the examination paper.



A Level Accounting

What are the possible career pathways?

- Auditor
- Management Accountant
- Banking
- Financial advisor
- Mathematics
- Business



A LEVEL ACCOUNTING

A Level Mathematics

A Level Mathematics is a qualification developed to be engaging for international students and to give them the necessary skills to support progression to higher education or further study in Mathematics.

AS Level (Year 1)	A Level (Year 2)
Content summary Pure Mathematics 1 Pure Mathematics 2 Options: (Choice of 1) Mechanics Statistics Decision	Content summary Pure Mathematics 1 Pure Mathematics 2 Options: (Choice of 1) Mechanics 1 + Decision 1 Statistics 1 + Decision 1 Mechanics 1 + Statistics 1 Mechanics 1 + Mechanics 2 Statistics 1 + Statistics 2
Assessment information: Weighting: 50% 3 assessments each is 1 hour and 30 minutes long and is out of 75 marks	Assessment information: Weighting: 50% 3 assessments each is 1 hour and 30 minutes long and is out of 75 marks

A LEVEL MATHS

A Level Mathematics

What can you study with A Level Mathematics at university?

With an A Level in Mathematics there are a range of courses that you can then go on to study. A few of the courses that require an A Level in Mathematics are Actuarial science, Aeronautical engineering, Civil Engineering, Economics, Mathematics, Mechanical Engineering, Physics and Statistics.

A LEVEL MATHS





BTEC Sport Level 3

PE will enable students to receive a well-rounded and full introduction to the world of PE, sport and sport science through the combination of physical performance and academic challenges

Component 1: Fitness and Body Systems	Component 2: Health and Performance
<p>Content summary</p> <ul style="list-style-type: none"> • Topic 1: Applied anatomy and physiology • Topic 2: Movement analysis • Topic 3: Physical training • Topic 4: Use of data 	<p>Content summary</p> <ul style="list-style-type: none"> • Topic 1: Health, fitness and well-being • Topic 2: Sport psychology • Topic 3: Socio-cultural influences • Topic 4: Use of data
<p>Written examination: 1 hour and 45 minutes 36% of the qualification</p>	<p>Written examination: 1 hour and 15 minutes 24% of the qualification</p>
Component 3: Practical Performance	Component 4: Personal Exercise Programme
<p>Content overview</p> <ul style="list-style-type: none"> • Skills during individual and team activities • General performance skills 	<p>Content overview</p> <ul style="list-style-type: none"> • Aim and planning analysis • Carrying out and monitoring the PEP • Evaluation of the PEP
<p>Non-examined assessment: internally marked and externally moderated 30% of the qualification</p>	<p>Non-examined assessment: internally marked and externally moderated 10% of the qualification</p>

BTEC SPORT LEVEL 3

BTEC Sport Level 3

What can you study with PE at Post 16?

This will assist with the AS and A Level PE courses at post 16

What are the possible career pathways?

Career opportunities are PE Teacher, Sports Scientist, Sports Nutritionist, Sports Physiotherapist, Sports Psychologist, Sports Coach



BTEC SPORT LEVEL 3

BTEC Business Level 3

The Pearson BTEC International Level 3 qualifications in Business, and in Enterprise and Entrepreneurship, are designed for learners in the 16–19 age group, who wish to pursue a career in business, primarily via higher education to access graduate entry employment with businesses, or alternatively through junior business employment.



Pearson BTEC International Level 3 Certificate in Business

Mandatory units

There are **two** mandatory units, one internal and one set assignment unit. Learners must complete and achieve a Pass or above in the mandatory units.

Pearson BTEC International Level 3 Certificate in Business				
Unit number	Unit title	GLH	Type	How assessed
Mandatory units - learners complete and achieve these units				
1	Exploring Business	90	Mandatory	Internal
2	Research and Plan a Marketing Campaign	90	Mandatory	Set assignment

Unit 1: Exploring Business

In this unit, you will gain an overview of the key ingredients for business success, how businesses are organized, how they communicate, the characteristics of the environment in which they operate, and how this shapes them and their activities. You will also look at the importance of innovation and enterprise to the success and survival of business organizations, with the associated risks and benefits. By developing relevant business knowledge and understanding, this unit will help you to progress to employment, vocational training and higher apprenticeships, or higher education.

BTEC BUSINESS LEVEL 3

BTEC Business Level 3

Unit 2: Research and Plan a Marketing Campaign

In this unit, you will learn how a marketing campaign is planned and developed. You will explore a range of different objectives that can be included in a marketing campaign such as increasing sales or market share, or establishing a brand image, and explore the various stages of the process an organization goes through when developing its campaign. Using your understanding of these factors, and of marketing models and tools, you will develop your own costed marketing campaign for a given product. You will examine the marketing aims and objectives for existing products and use your own independent market research data to make recommendations about the type of marketing campaign a business organization should undertake. To complete the assessment task within this unit, you will need to draw on your learning from across your programme.

Optional Units

Key								
Pearson Set Assignment		M	Mandatory units			O		Optional units
Unit (number and title)	Unit size (GLH)	Certificate (180 GLH)	Subsidiary Diploma (360 GLH)	Foundation Diploma (510 GLH)	Diploma (720 GLH)	Extended Diploma (1080 GLH)		
1 Exploring Business	90	M	M	M	M	M		
2 Research and Plan a Marketing Campaign	90	M	M	M	M	M		
3 Business Finance	90		O	M	M	M		
4 Managing an Event	90		O	O	M	M		
5 International Business	60		O	O	O	O		
6 Principles of Management	60		O	O	O	M		
7 Business Decision Making	120		O	M	M	M		
8 Human Resources	60		O	O	O	O		
9 Team Building in Business	60		O	O	O	O		
10 Recording Financial Transactions	60		O	O	O	O		
11 Financial Statements for Public Limited Companies	60		O	O	O	O		
12 Financial Statements for Specific Businesses	60		O	O	O	O		
13 Cost and Management Accounting	60		O	O	O	O		
14 Investigating Customer Service	60		O	O	O	O		
15 Investigating Retail Business	60		O	O	O	O		
16 Visual Merchandising	60		O	O	O	O		
17 Digital Marketing	60		O	O	O	O		
18 Creative Promotion	60		O	O	O	O		

What can you study with BTEC Business at Post 16?

This will provide the foundations needed for higher education in the following fields Business and Management, Business and Finance, Business with Human Resource and Business Marketing.

What are the possible career pathways?

Career opportunities include Business Teacher, Accountant, Business Analyst, HR and Business reporter.



مدرسة الإبداع
العلمي الدولية
INTERNATIONAL SCHOOL
OF CREATIVE SCIENCE

ند الشبها NAD AL SHEBA

